

MONOCLONAL ANTIBODY DATASHEET



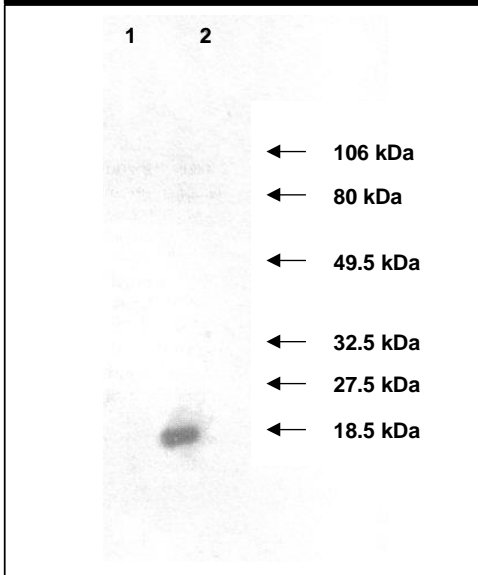
Tissue inhibitor of metalloproteinase 2a (TIMP2a)

Target species	Zebrafish (danio rerio), homo sapiens
Target antigen	Tissue inhibitor of metalloproteinase 2a (TIMP2a)
Isotype	IgG2b, κ
Clone	4A3
Purification	unpurified; supplied as hybridoma supernatant
Immunogen	ovalbumin-conjugated synthetic peptide DSGNDIYGNPI
B Cell Donor	BALB-c mouse
Fusion Partner	Ag 8563
Positive Control	ELISA - Peptide immunogen IHC : formalin-fixed, paraffin-embedded colonic adenocarcinoma Western blot : rhTIMP-2, 400 ng per lane IHC - zebrafish embryo
Cross-reactivity	N/A

Applications		Recommended Usage Conditions
ELISA	✓	neat dilution
Western Blot	✓	1/3 dilution
IHC- paraffin embedded tissues	✓	1/3 dilution, antigen retrieval: microwave 7 min @ 950W in 0.01M sodium citrate buffer, pH 6.0
IHC-zebrafish	✓	1/3 dilution (Inoue & Wittbrodt, 2011)

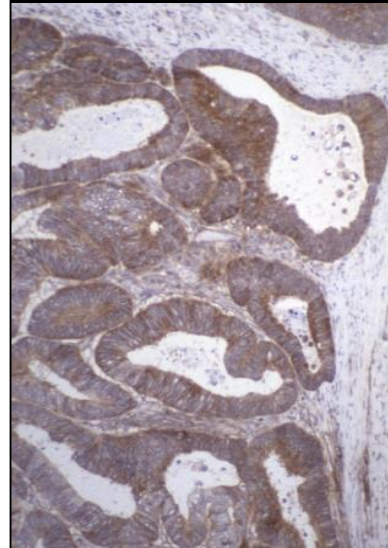
References		
1	Murray GI, Duncan ME, Arbuckle E, Melvin WT, Fothergill JE (1998) Matrix metalloproteinases and their inhibitors in gastric cancer. <i>Gut</i> 43 : 791-797.	
2	Curran et al (2004) <i>Clin Cancer Res.</i> 10: 8229-8234.	
3	Jeffery et al (2009) <i>Histopathology.</i> 54: 820-828.	
4	Lyall et al (2006) <i>Clin Cancer Res.</i> 12:1184- 1191.	

**western blotting of protein standards
(400 ng/lane) with MAb 3A4**

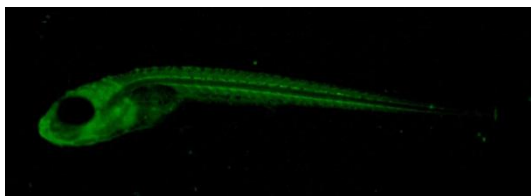


400 ng samples of recombinant human pro-enzyme (lane 1 = TIMP-1; lane 2 = TIMP-2) were subjected to SDS-PAGE, transferred to PVDF membrane, and detected by immunoblotting with MAb 3A4 specific for TIMP-2

**IHC: Wax embedded human
colon**



TIMP-2: 3A4 super. 1/32



Anti-TIMP2a staining whole-mount
zebrafish embryo