

# MONOCLONAL ANTIBODY DATASHEET

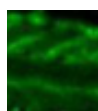
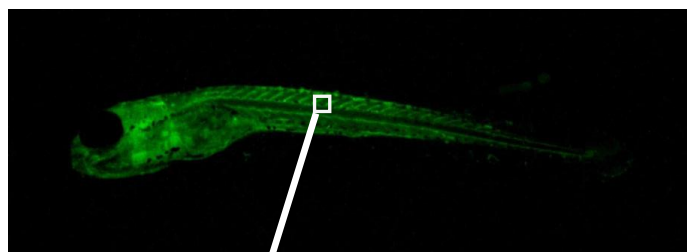


## Fibroblast Growth Factor 1 (FGF1)

Target species	Zebrafish (danio rerio)
Target antigen	Fibroblast Growth Factor 1 (FGF1)
Isotype	IgG1, $\kappa$
Clone	V8P1G5*F2
Purification	unpurified; supplied as hybridoma supernatant
Immunogen	ovalbumin-conjugated 10 amino acids synthetic peptide
B Cell Donor	BALB-c mouse
Fusion Partner	Ag 8563
Positive Control	<b>ELISA-</b> Peptide immunogen <b>Western Blot-</b> whole organism lysate <b>IHC-</b> zebrafish embryo
Cross-reactivity	N/A

Applications		Recommended Usage Conditions
ELISA	✓	neat dilution
Western Blot	Not tested	Not tested
IHC	✓	1/3 dilution (Inoue & Wittbrodt, 2011)

Anti-FGF1 immunostaining on whole-mount zebrafish embryo



Vessels